



The Royal Scottish Shipping Line Ltd

The Royal Scottish Shipping Line Ltd
Kiloran Hall
Middle Balado
Kinross
Tayside
KY13 0NH
Tel 01577 861121
Email: info@royalscottish.com

Spirit of Fortitude Deck Plan

Type: Twin Screw Diesel Motor Yacht.
Designer: Yavuz Mete.
Construction: Steel hull superstructure and teak laid decks on steel.
Year Built: 1997.
Refits: 2006/2014.
Length: 33.32 mtrs.
Lwl: 31 mtrs.
Beam: 7,10 mtrs.
Draft: 2,23 mtrs.
Gross Tonnage: 198 tons.

Deck equipment.

Anchor Windlass System: DATA hydraulic.
Anchors: 2 x ships cast eye type anchors 485 lbs each.
Deck Capstans: 1 x Data (hydraulic) on stern deck.
Pasarelle: Hydraulic Pasarelle.
Tenders: 5.20m Novamura RIB with 60hp outboard.
Pioneer Safety Boat with landing craft door.
Additional Cranes/Davits: 1 x 800kg capacity electric crane for tender lift.
Stern Boarding Gangway: Electric gangway.
Miscellaneous: Side gangway.

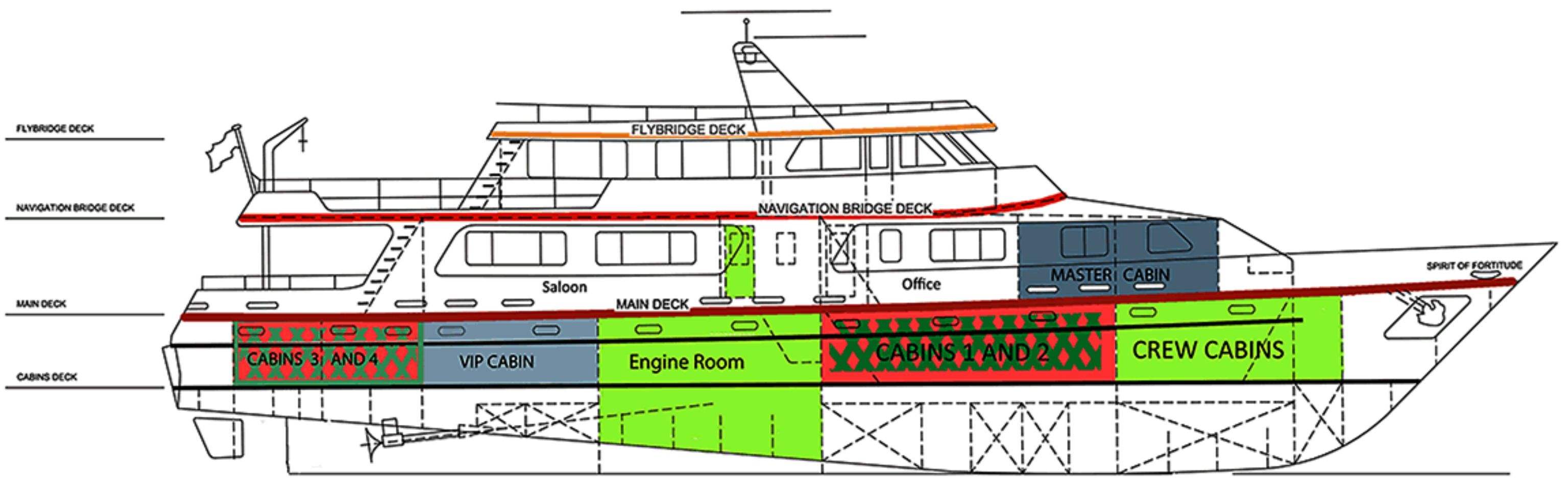
Safety Equipment:

Spirit of Fortitude carries the following equipment:

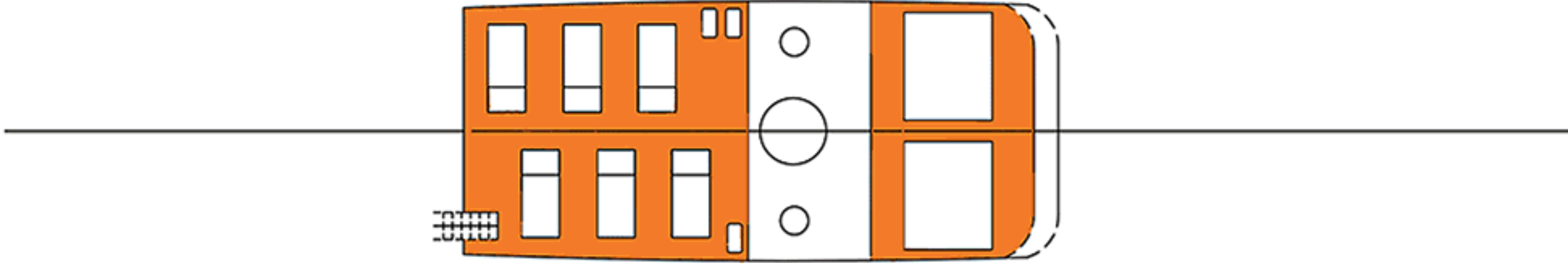
Two ships tenders with capacity for twenty four crew and passengers, one of which has a 60hp outboard, the other has a 30hp outboard

Life rafts for up to thirty six.
Life jackets (children and adult).
Fire alarm system.
Automatic engine room fire extinguishing system (CO2).
Ships alarm system.
New stainless steel hand rails, on all levels.
Emergency Position Indicating Radio Beacon.
SART Search and Rescue Transponder.
Portable fire extinguishers throughout the vessel.
Automatic bilge alarm system.
Life buoys.
Sea Water Firefighting ring main with sea water lift pump.
Emergency fire fighting/flooding pump.
Bridge navigation watch system.
Automatic Identification system (AIS).

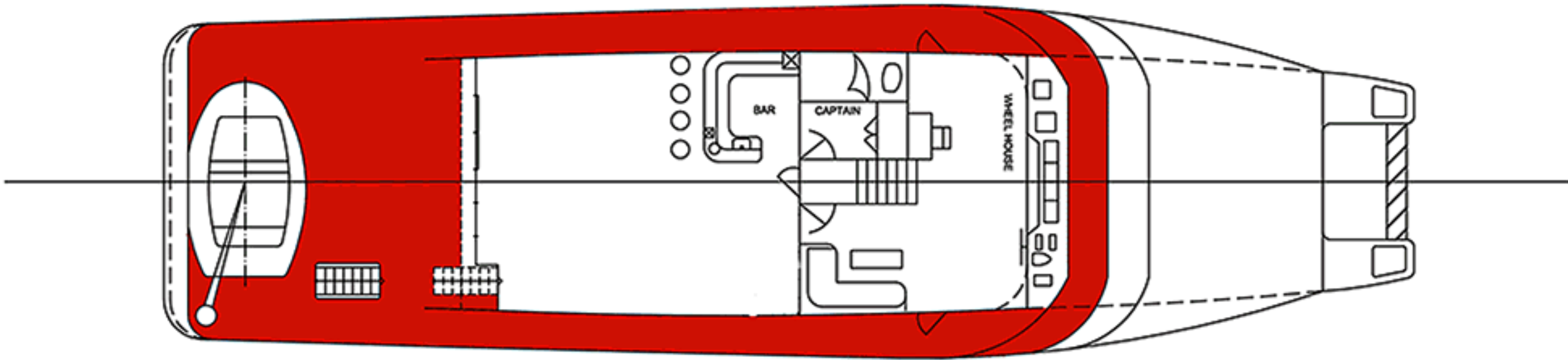




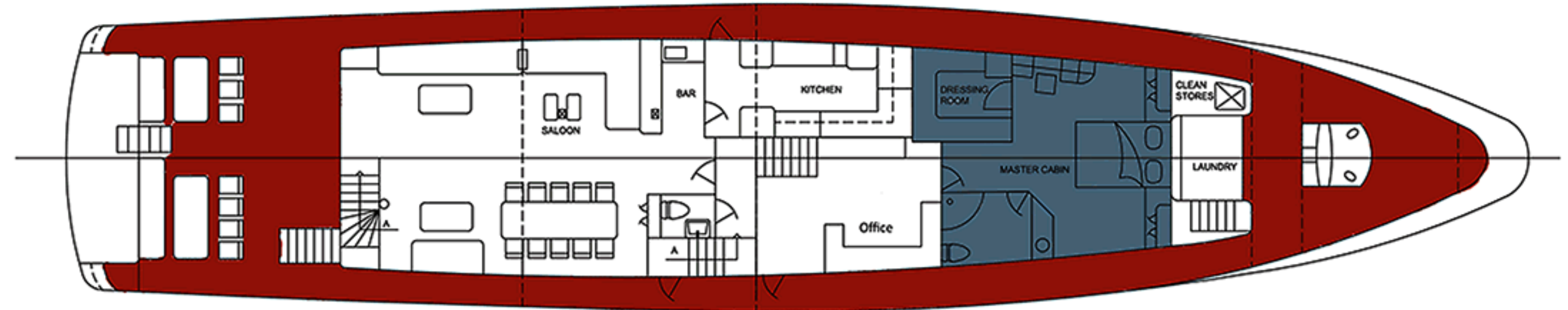
FLYBRIDGE DECK



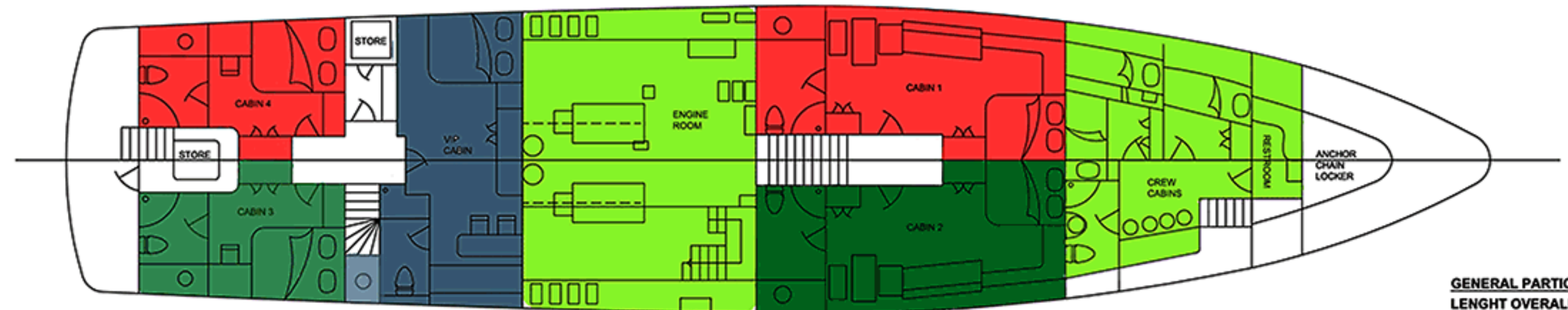
NAVIGATION BRIDGE DECK



MAIN DECK



CABINS DECK



GENERAL PARTICULARS
 LENGHT OVERALL :33.7 m
 LENGHT PP :28.2 m
 BREADTH :7.04 m
 DEPTH :4.2 m
 DRAUGHT :2.12 m

VESSEL:	M/Y SPIRIT OF FORTITUDE	
TITLE:	GENERAL ARRANGEMENT PLAN	
		SCALE: 1:100
		DATE: 26/03/2015